

SYMPARE MES

Methyl Ester Sulphonates

Curated for Personal Care

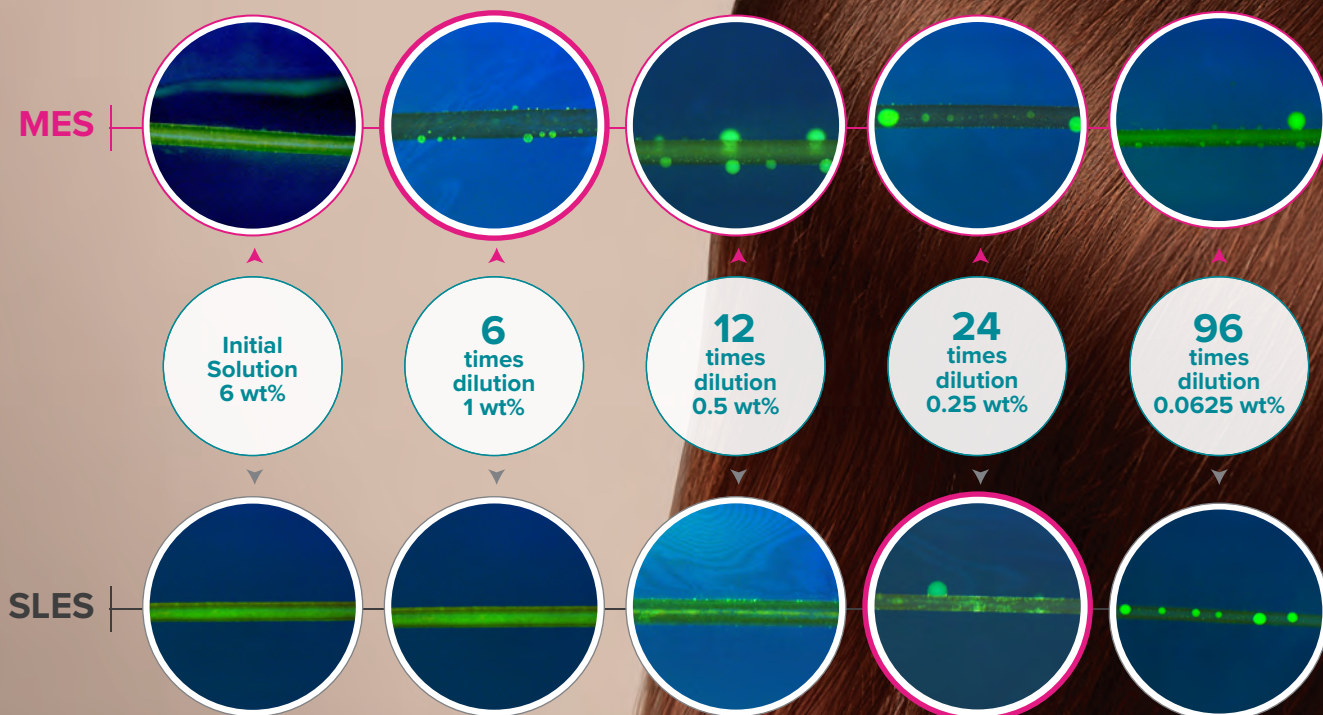
- ✔ Sulphate-free anionic surfactant
- ✔ Palm-based plant source
- ✔ Low irritation & mild
- ✔ Sustainable alternative to petroleum-based surfactants
- ✔ Listed in CleanGredients database; meets EPA's Safer Choice Standard



Enhanced Oil-Drop Deposition

SYMPARE MES offers superior performance for oil-drop deposition on the hair surface. SYMPARE MES provides easier drop adhesion than SLES measured via Press Drop Method.

MES provides easier drop adhesion than SLES



Fluorescent microscopy of human hair that was soaked in polydimethylsiloxane containing a fluorescent dye (Bodipy) and then, immersed in a solution of surfactants (MES or SLES) and cationic polymers (Jaguar C-13-S) at different degree of dilutions.

Get Expert Insight



* SYMPARE MES has been reviewed by EPA's Safer Choice program and qualified for use in Safer Choice-certified products.